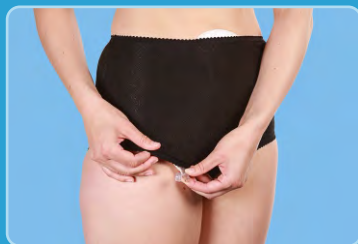




CUI Wear is the UK's leading and most innovative provider of
Hernia & Ostomy Support Garments & Products



Unique features of the Fulcionel Easywear/AntiRoll Belt helps to provide the vital support when required or for long periods of time with ultimate comfort that is easy to be worn, adjusted and taken off.



The CUI team of Support Specialists are based across the whole of UK and are available for FREE home visits for any measurements, fittings & advice.

Available on NHS Prescription

Freephone 0800 279 2050
www.cuiwear.com

FAQ's

When do I need support?

Support garments can help to prevent a hernia forming or offer security when a hernia is already present. Activity or work can then continue with the added assurance, protection, comfort and stability depending on individual needs. Garments come in many different forms to suit many different requirements, situations or activity. There are also differing levels of support to suit with adjustability and wear-ability to provide a balance between support and comfort.

When should I wear support?

Research and opinion indicates that if you have a stoma there is a higher risk of hernia formation and therefore support should be considered and worn during any periods of activity. This can be during any routine activity, work or leisure but especially if anything strenuous such as lifting or exercise. Essentially whenever there is any exertion that puts any strain on the body (even a cough or cold will put pressure onto the abdominal area) which when combined with any weakness in this area can lead to a hernia! If you have an existing hernia then it is suggested that support should be worn as often as possible.

Will support affect my stoma?

The 'Fulcione!' material used in our support garments has been especially developed to allow any stoma pouch to work as intended. The 2-way stretch material on the appropriate garment (which we fit to individual requirements and advise how and when to wear) will allow continued activity supporting the abdominal area or hernia whilst allowing stoma function.

However some Nurses or patients prefer to position the pouch outside of the garment and if this is the case then we can cut a hole in the garment to the exact size of the pouch used.

What is the material made of?

It is part polyester and elastine – which is 2-way stretch and breathable. This 2-ply material provides support whilst allowing a conformity and moulding around any shape promoting comfort/preventing heat build-up. We also incorporate anti-roll (AR) strips at the varied height (often high) waistline or at both the top and bottom of the support belts. This ensures ultimate comfort for the wearer and no 'digging in'. A unique 'glove design' also allows a very easy action of putting on, adjusting and removing our belts.

Garments are generally worn under clothing/against the skin and we provide/offer advice when fitting or at any time afterwards. Our team of Support Garment Specialists or office based team members are always available to assist.

Does it need replacing?

Yes our garments will need replacing eventually. Support wear is needed often and generally on an on-going, daily basis. With wear and washing often few garments/belts will be worn in rotation with one being worn, one being washed/dried etc. This prolongs use and garments are suggested to be replaced on an annual basis thereafter.

What happens if my garment no longer fits me?

It is natural for our body shape to change over a period of time and if you find that your garment no longer provides the required support or holds as before then we can be contacted on our Freephone number to visit and re-assess and re-measure.

How do I keep it clean?

Our garments can be machine washed on a normal cycle (less than 40°). They should not be "tumble dried" however and we suggest that they are hung to dry naturally.

What colours can I have?

We provide most garments in either Black, White or Beige.

How many can I have?

This varies dependant on individual needs and your prescribing GP. The usual amount is up to 3 garments per annum on prescription. Garments are also available directly from us by telephone or our website.

Will I be reminded that I need to replace them?

Yes – our office will write 12 months after your request to advise that a renewal request for a prescription and re-order can be made. We are always available however if any advice or information is required.

Index

		Support Level	Page
Fulcione! Hernia Support Belts AR		Adjustable Strength	4/5
Fulcione! 'Mesh' Hernia Support Belt		Adjustable Breathable	5
Hernia Support Girdles (Standard Garments)		Maximum Support	6
Fulcione! 'BESPOKE' Belts & Girdles		BESPOKE Made to Measure as requested	7
Fulciolite		Moderate Support with inbuilt pocket	8
Ultra-Lite		Light Support with inbuilt pocket	8
'Seamless' Fulciosupport		Seamless Support	9
CUI 'Ostomy Underwear'		Underwear with inbuilt pocket	10/11

YOUR SUPPORT SPECIALIST

Name	Telephone Number

YOUR SUPPORT GARMENT/DIARY

Garment/s	Code	Page

Year	Jan	Feb	Mar	Apr	May	Jun	Jul	Aug	Sept	Oct	Nov	Dec

Fulcionel Hernia Support Belts AR (Anti-Roll)

**Adjustable
Strength**

What is it?

Research indicates and general medical opinion supports that there is a high risk of hernia formation following any abdominal or stoma procedure. To help prevent this it is advisable to wear suitable support products.

The **FULCIONEL HERNIA SUPPORT BELT** is manufactured from a unique 2-way airflow stretch fabric which conforms and moulds over any shape & size of hernia to provide excellent support and comfort. Ideal for prevention of parastomal hernia or to minimise further expansion of the existing herniation/bulge.



Sizes	Measurements/Size Guide	20cm Depth Belt Code	26cm Depth Belt Code
Extra Small	up to 75cms	F550	F562
Small	75cms to 90cms	F551	F563
Medium	90cms to 105cms	F552	F564
Large	105cms to 120cms	F553	F565
Extra Large	120cms to 135cms	F554	F566
Bespoke (any size)	any size/tailor made	F580	F580

With Hole Cut Option

Sizes	Measurements/Size Guide	20cm Depth Belt Code	26cm Depth Belt Code
Extra Small (with Hole cut)	up to 75cms	F556	F568
Small (with Hole cut)	75cms to 90cms	F557	F569
Medium (with Hole cut)	90cms to 105cms	F558	F570
Large (with Hole cut)	105cms to 120cms	F559	F571
Extra Large (with Hole cut)	120cms to 135cms	F560	F572
Bespoke (any size)(with Hole cut)	any size/tailor made	F580	F580

Baby Belts	Code	F701
Tubular Belts	Code	F701

- **FIRM SUPPORT** with **ADJUSTABILITY** to suit personal needs or activity: to reduce the risk of developing a hernia or support any existing hernia.
- Easy fit - glove design to allow easier & comfortable application, wear and an adjustable Velcro fastening.
- Worn against the skin the breathable fabric provides ultimate comfort.
- **ANTI-ROLL** silicone bands at both the top and bottom of the belt.
- Our **2-WAY STRETCH** fabric supports muscles to help prevent herniation but allows the stoma pouch to continue to work.
- Belt 'depth options' of 20cm or 26cm to suit individual requirements.
- **MACHINE WASHABLE** up to 40° – best dried naturally.
- Choice of colours Black, White or Beige.
- **FULL RANGE of SIZES** from XS to XL (see our size guide chart) with bespoke sizes also available.
- Hole cutting' service also provided if preferred to allow the stoma pouch to sit outside of the garment.
- **BESPOKE** version tailor made for any individual needs. (See Page 7)
- Available on **PRESCRIPTION** or as a Direct Purchase.
- Free **FITTING & ADVICE** service available. Support Specialists Nationwide.

Fulcionel 'Mesh' Hernia Support Belt

Adjustable
Breathable

What is it?

The mesh version of the **FULCIONEL HERNIA SUPPORT BELT** has all the same features and benefits as the standard support belt but is manufactured from a lighter 'mesh' stretch fabric for increased breathability with a moderate support.

Conforms & moulds over any shape & size of hernia to provide excellent support and comfort. Ideal for prevention of parastomal hernia or to minimise further expansion of the existing herniation/bulge.



Sizes	Measurements Size Guide	15cm Depth Belt Order Codes	20cm Depth Belt order codes	26cm Depth Belt Order Codes
Small	75cms to 90cms	F715	F725	F735
Medium	90cms to 105cms	F716	F726	F736
Large	105cms to 120cms	F717	F727	F737
Extra Large	120cms to 135cms	F718	F728	F738
XXLarge	135cms to 150cms	F719	F729	F739

With Hole Cut Option

Sizes	Measurements Size Guide	15cm Depth Belt Order Codes	20cm Depth Belt order codes	26cm Depth Belt Order Codes
Small (with Hole cut)	75cms to 90cms	F720	F730	F740
Medium (with Hole cut)	90cms to 105cms	F721	F731	F741
Large (with Hole cut)	105cms to 120cms	F722	F732	F742
Extra Large (with Hole cut)	120cms to 135cms	F723	F733	F743
XX Large (with Hole cut)	135cms to 150cms	F724	F734	F744

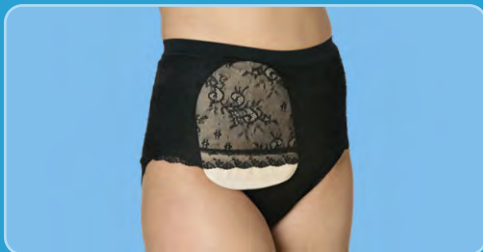
Tubular Belts Code F701

Hernia Support Girdles (Standard Garments)

**Maximum
Support**

What is it?

To help prevent hernia development it is advisable to wear suitable support garments. The **FULCIONEL HERNIA SUPPORT GIRDLE** is manufactured from our unique 2-way airflow (Fulcionel) stretch fabric which conforms & moulds over any shape & size of hernia to provide the required support and comfort. Ideal for prevention of parastomal hernia or to minimise further expansion of the existing herniation/bulge.



FREE ADVICE & FITTING SERVICE AVAILABLE

Support specialists across the UK Call us to arrange a visit!

Ordering Information

With so many options available (as standard garments) the product variations and their codes are best fitted by your Nurse Specialist or one of our Support Garment Specialists. Whilst many of the garment options are standard and immediately available we can also tailor these to suit exact requirements whatever they may be. (See Page 7 also).

The standard girdle/s/garments are available in both Female and Male specific versions. Standard version also have the options for:

- Brief style or with legs/High or Low waistband
- Or With a 'Lace' front/Black/White/Beige

A Hole cutting service is also available if requested by the referrer or patient and our team are available to discuss which option from the standard range or if other 'Bespoke' options are best suited to meet specific needs or requirements ultimately to ensure best comfort, style and support.

What are they?

In the same way as the 'fulcional' support garments the BESPOKE options of our range are manufactured from our unique '2-way airflow stretch' fabric which we can tailor and fit around any individual shape or shape & size of hernia.

This helps to provide the balance between specific support and comfort so that it can be worn even for longer periods.

The Bespoke service allows us to 'tailor make' a belt or garment incorporating one or more of the many features to create the best possible option to suit individual needs.



Ordering Information

With so many options available (as standard garments) the product variations and their codes are best fitted by one of our Support Specialists.

Prescription Codes	
F580	Bespoke Belt
M141	Male Garment/Girdle
F381	Female Garment/Girdle

Our garments can be made to measure to suit any number of requirements however specific or whatever they may be.

We provide a free home fitting service which allows us to draw on our experiences and discuss which garment best suits your needs for a 'bespoke' belt, garment or girdle design incorporating any number of features to fit & support any shape or size of hernia or comfort. Advice, measuring & fitting is carried out by one of our dedicated experienced team members assigned as your 'Support Specialist'. All of our team are DBS (formerly CRB) checked and MIA Certified.

We can include:

- Patented 'cup' support belts to gently hold large hernias
- This Proprietary design minimises pressure on bulge
- Unique "glove design" for ease of wear/adjustment
- 'Cup' seams are lined to prevent irritation around sensitive areas
- Reinforced panels where required.
- Reduction of dragging sensations allowing extra comfort for longer wear
- Designs endorsed by Stoma Nurses
- Velcro opening
- Higher/Lower/Variable height waistbands
- Dated waist-bands to conform/mould to any body or hernia shape
- Hole cutting service (if suggested/required)

What are they?

The **Fulciolite** & **Ultra Lite** garments are both high waisted female briefs.

The **Fulciolite** fabric provides a **MODERATE** or **MEDIUM** support level which is Ideal for 'every-day' wear and comfort.

The fabric provides an equal stretch ensuring that the support level is distributed evenly throughout the garment.

The Lycra yarn is pre-set with a memory that enables the stretch to remain consistent when worn and after washing.

For both options a unique Inner 'scooped' pocket shape allows any pouch to gently rest but also securely.

Both are also available with either Left or Right sided inner pockets as required. Suitable for 'all' pouch types including drainable. All pockets feature an opening at the bottom for access.

Available in White only.

The **Ultra-Lite** garment offers the same benefits as the Fulciolite but in a soft white light cotton lycra for a **LIGHT** support.

A high waisted design means that there is less chance of 'digging into' the pouch.

This cotton Lycra mix provides a **LIGHT** support level which is Ideal for 'every-day' wear and comfort or even for wear whilst sleeping.

This fabric also provides an equal stretch ensuring that the lighter support level is still evenly distributed throughout the garment.

Fulciolite

Size	Left inner pocket	Right inner pocket
8	FG01	FG10
10	FG02	FG11
12	FG03	FG12
14	FG04	FG13
16	FG05	FG14
18	FG06	FG15
20	FG07	FG16
22	FG08	FG17
24	FG09	FG18



MODERATE

Support with inbuilt pocket

How to obtain

These garments can be prescribed by your GP in line with any recommendation from your Nurse Specialist.

However all supports including the lighter 'everyday' or overnight **Ultra Lite** underwear is also available for purchase directly by telephone or from our website www.cuiwear.com

Our team are happy to discuss any aspect of our garments with you if you want to be certain that you are considering the correct level of support.

Ultra-Lite

Size	Left inner pocket	Right inner pocket
8	CG01	CG10
10	CG02	CG11
12	CG03	CG12
14	CG04	CG13
16	CG05	CG14
18	CG06	CG15
20	CG07	CG16
22	CG08	CG17
24	CG09	CG18



LIGHT

Support with inbuilt pocket

Care Instructions (for all garments):

We advise that all of our support garments are machine washed at a maximum 40°C.

Garments should be dried naturally to ensure longer lasting performance.

Where there is any Velcro we suggest that this is closed during any wash.

For best results we suggest garments are placed in a 'wash-bag'

What is it?

The Seamless FulcioSupport garment was originally designed with the help of several Specialist Nurses and patients to provide appropriate light 'Post-Operative' comfortable support.

Our Seamless range offers the ultimate in comfort with no seams and a cotton gusset lining. Lightweight support ideal for both post-operative wear and security, or ongoing nightwear and re-assurance.

Available in seamless Ladies brief style or Unisex boxers'. Black, White or Beige colours available.

Fulciosupport seamless underwear can also be purchased directly by telephone or from our website www.cuiwear.com
Our team are available to discuss any aspect of our garments if you want to be certain that you are considering the correct level of support or type for your needs.



Ladies Seamless Support Brief

Sizes	Colour	Code	Colour	Code	Colour	Code
S/M	White	FG31	Beige	FG36	Black	FG41
M/L	White	FG32	Beige	FG37	Black	FG42
L/XL	White	FG33	Beige	FG38	Black	FG43
XL/2XL	White	FG34	Beige	FG39	Black	FG44
2XL/3XL	White	FG35	Beige	FG40	Black	FG45

Unisex Seamless Support Boxers'

Sizes	Colour	Code	Colour	Code	Colour	Code
S/M	White	CG31	Beige	CG36	Black	CG41
M/L	White	CG32	Beige	CG37	Black	CG42
L/XL	White	CG33	Beige	CG38	Black	CG43
XL/2XL	White	CG34	Beige	CG39	Black	CG44
2XL/3XL	White	CG35	Beige	CG40	Black	CG45

CUI Ostomy Underwear (High Waisted Women's cotton Underwear with internal scoop pouch)

**OSTOMY
UNDERWEAR**
With built in pocket

PATENTED

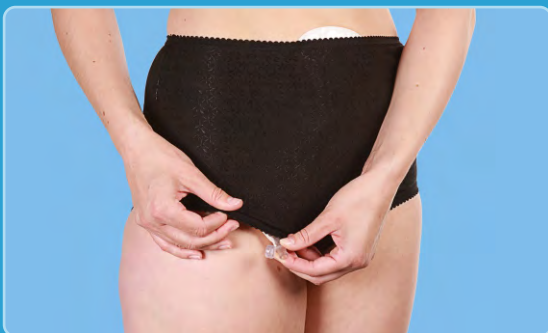
Full Brief Position of Pocket

Size	Left	Right	Twin	Colour
8	CF01	CF10	CF19	White
10	CF02	CF11	CF20	White
12	CF03	CF12	CF21	White
14	CF04	CF13	CF22	White
16	CF05	CF14	CF23	White
18	CF06	CF15	CF24	White
20	CF07	CF16	CF25	White
22	CF08	CF17	CF26	White
24	CF09	CF18	CF27	White



Full Brief Position of Pocket

Size	Left	Right	Twin	Colour
8	CF31	CF40	CF49	Black
10	CF32	CF41	CF50	Black
12	CF33	CF42	CF51	Black
14	CF34	CF43	CF52	Black
16	CF35	CF44	CF53	Black
18	CF36	CF45	CF54	Black
20	CF37	CF46	CF55	Black
22	CF38	CF47	CF56	Black
24	CF39	CF48	CF57	Black



Shortie Position of Pocket

Size	Left	Right	Twin	Colour
8	BS01	BS10	BS19	White
10	BS02	BS11	BS20	White
12	BS03	BS12	BS21	White
14	BS04	BS13	BS22	White
16	BS05	BS14	BS23	White
18	BS06	BS15	BS24	White
20	BS07	BS16	BS25	White
22	BS08	BS17	BS26	White
24	BS09	BS18	BS27	White

Shortie Position of Pocket

Size	Left	Right	Twin	Colour
8	BS31	BS40	BS49	Black
10	BS32	BS41	BS50	Black
12	BS33	BS42	BS51	Black
14	BS34	BS43	BS52	Black
16	BS35	BS44	BS53	Black
18	BS36	BS45	BS54	Black
20	BS37	BS46	BS55	Black
22	BS38	BS47	BS56	Black
24	BS39	BS48	BS57	Black

What are they?

The CUI pouch support range is designed with a patented in built 'scoop' pouch cover.

This 'scoop pocket' keeps any pouch used away from the skin to help in minimise irritation. High waisted to prevent discomfort around the stoma and surrounding area.

Gently supports any weight or movement of the pouch during the day or night and minimise any pouch noise.

CUI Ostomy underwear is made from 100% cotton and secures any stoma bag used with internal pocket options of Right, Left, Central or Twinned.

Ladies Briefs Size Guide

Order Size	10	12	14	16	18	20	22
Waist cms	69	72	76	80	89	96	102
Waist inches	27"	28.5"	30"	31.5"	35"	37.5"	40"
Hips cms	93	95	100	104	113	119	125
Hips Inches	36.5"	37.5"	39.5"	41"	44.25"	46.75"	49"



CUI Ostomy Underwear (High Waisted Men's cotton Underwear with internal scoop pouch)

**OSTOMY
UNDERWEAR**
With built in pocket

PATENTED



Boxer Position of Pocket

Size	Left	Right	Twin	Colour
Small	CW01	CW06	CW11	White
Medium	CW02	CW07	CW12	White
Large	CW03	CW08	CW13	White
X-Large	CW04	CW09	CW14	White
XX-Large	CW05	CW10	CW15	White

Boxer Position of Pocket

Size	Left	Right	Twin	Colour
Small	CN01	CN06	CN11	Navy
Medium	CN02	CN07	CN12	Navy
Large	CN03	CN08	CN13	Navy
X-Large	CN04	CN09	CN14	Navy
XX-Large	CN05	CN10	CN15	Navy

Fitted Trunks Position of Pocket

Size	Left	Right	Twin	Colour
Small	LT01	LT06	LT11	Navy
Medium	LT02	LT07	LT12	Navy
Large	LT03	LT08	LT13	Navy
X-Large	LT04	LT09	LT14	Navy
XX-Large	LT05	LT10	LT15	Navy

Fitted Trunks Position of Pocket

Size	Left	Right	Twin	Colour
Small	LT16	LT21	LT26	Denim
Medium	LT17	LT22	LT27	Denim
Large	LT18	LT23	LT28	Denim
X-Large	LT19	LT24	LT29	Denim
XX-Large	LT20	LT25	LT30	Denim

◀ Female Briefs or 'Shortie' options

Male Boxers or Trunk options ▶

All underwear scoop pockets feature drainage openings as required.

Range of colours available.

Mens Boxer/Trunks Size Guide

Order Size	S	M	L	XL	XXL
Waist cms	76-81	84-89	91-99	102-107	108-113
Waist inches	30-32"	33-35"	36-39"	40-42"	43-45"



When should I consider a CUI support product?

You can benefit from various levels of support to either prevent a hernia or if you currently have a hernia to provide best possible protection allowing normal activity to continue. There are varying levels of support and different garments are available to best suit individual requirements.

These can be worn just for periods of strenuous activity or for longer periods of time to suit your lifestyle, your work or any sports. Support should also be considered even if you have a just a cough, cold or sneezing bout!. 'Lower level support' garments could be worn post-operation or as night time wear for added soft assurance and security. The materials and design of our garments will allow any stoma pouch to function whilst supporting the weakened abdominal muscles and area. Correct size and design to suit your own individual needs help achieve best results.

We can show you the various garments and discuss./advise on what might offer the best solution but to also provide reassurance for any concerns you may have. Sometimes a 'hole' could also be cut to the size of any stoma pouch to allow the bag to sit outside of the garment if you so wish; although this does slightly reduce the level of support provided.

Whilst there is a standard range of support belts and garments we can also adapt these to accommodate any number of requirements or needs with a 'Bespoke' 'tailor made' service incorporating features to provide the exact fit and level of comfort/Support!

When are 'CUI' support garments suitable?

CUI Fulcior® Belts or Garments are suitable for the following conditions:

- ✓ Colostomy (C)
- ✓ Urostomy (U)
- ✓ Ileostomy (I)
- ✓ Gastrostomy
- ✓ Hernia
- ✓ Hernia prevention
- ✓ Post-Surgical
- ✓ Urine Bag suspensory system
- ✓ General or any strenuous activity-work, sports, lifting, etc
- ✓ Coughs/Colds/Hay fever

**FREE
FITTING & ADVICE
SERVICE AVAILABLE**

**Support specialists across the UK
Call us to arrange a visit!**

At what times should I consider wearing a CUI support garment?

Post-Surgical although rest is advised following procedures even if you develop a cough or cold some support even if light should be considered. Different levels of support from comfortable and light (seamless) underwear to high waisted boxer shorts/trunks with internal scoop pockets will gently house a stoma pouch.

Life Style Whether at work or during leisure time there are many different demands on the body and in particular the abdominal area which can be supported in a number of ways. Adjustable belts can provide quick and easy multi-level support that can be controlled simply as needs or activities change. If there is an existing hernia garments can be adapted to specific needs to provide both a lift and support.

Support should be considered if you do not have a hernia as a preventative measure whether you are at work or for any leisure or sporting endeavours. These can range from simply sitting/working from a desk, if you are driving, lifting at all, Gardening/shopping etc or indeed any form of moderate, strenuous or variable activity.

Available on NHS Prescription

Freephone 0800 279 2050
www.cuiwear.com

If you have any questions at all – Call us we can help!
If you are awaiting delivery of your garment – Call us we can help?